



Comune di Villanova Canavese

# CLASSIFICAZIONE ACUSTICA

Tavola 3 Fase IV  
scala 1 : 5 000  
settembre 2004

Il Sindaco

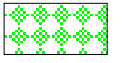





Progettazione  
**ENVIA**

dott. Riccardo GIOVINETTO  
dott. Stefano ROLETTI



T\_CA\_3\_04\_vin

## LEGENDA

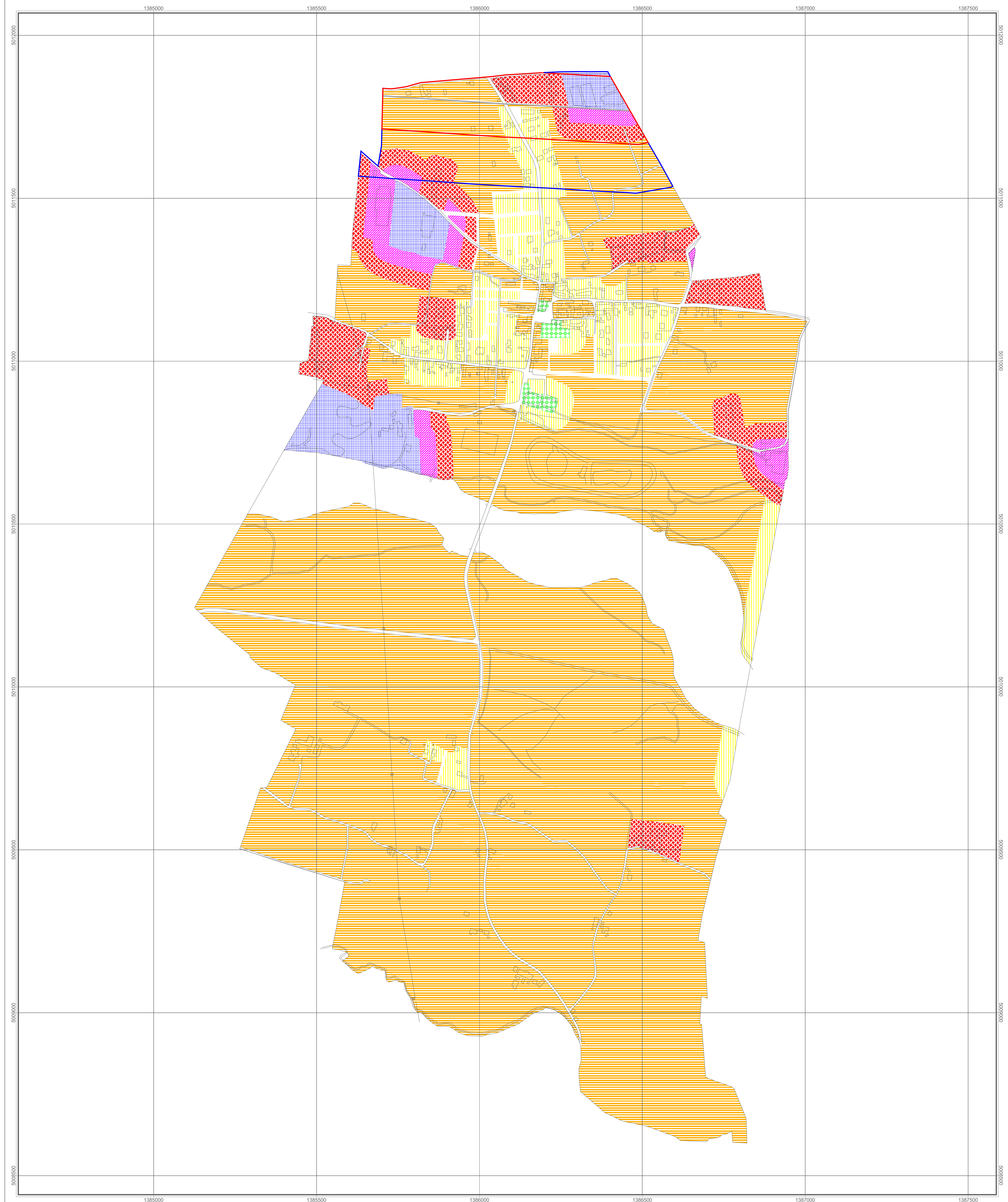
### Classe acustica

-  I - Aree particolarmente protette
-  II - Aree ad uso prevalentemente residenziale
-  III - Aree di tipo misto
-  IV - Aree di intensa attività umana
-  V - Aree prevalentemente industriali
-  VI - Aree esclusivamente industriali

### Fasce di pertinenza delle infrastrutture di trasporto ferroviarie

-  Fascia A
-  Fascia B

 Limiti comunali



1 : 5 000  
0 0.1 0.2 0.3 0.4 0.5 km